



04

Human
Developments

08

Location &
Connectivity

12

Welcome
to Westown
Medical Centre

22

Westown
Medical Centre
Services

30

Design &
Architecture

42

About SODIC

Human Developments

A large, stylized hand holding a modern building structure, symbolizing human development and care. The hand is rendered in a light, textured, almost ethereal style, and the building it holds is a multi-story structure with a complex, layered facade. The background is a bright, hazy sky with a flock of birds flying in the distance. The overall composition is clean and modern, with a focus on human-centric development.

Ever since our inception in 1996, we set our minds on creating Human Developments rather than merely focusing on bricks and mortar. We consider the elements that genuinely improve people's quality of life, creating holistic communities where people can realise their full potential and lead productive, creative lives.

Our belief in Human Developments has always helped us honour our commitments to our clients, providing them with added value. In doing so, we challenge ourselves by introducing new, exciting projects that deliver on the most stringent of standards in design, execution, and delivery time frames, as well as customer service and property management.

Because of this, we have been able to establish a solid track record of world-class, award-winning developments, paving the way for SODIC to be at the forefront of the Egyptian real estate market today.

SODIC West



SODIC West is Sheikh Zayed's largest mixed-use development, offering the incentives of downtown living away from the hustle and bustle of urban city life.

Twice the size of Zamalek, SODIC West embraces meticulously master-planned, exciting upscale residential, commercial and retail developments such as Beverly Hills, Westown Residences, Allegria, Forty West, The Polygon, The Strip and Westown Hub.



Location & Connectivity



SODIC West is connected to downtown Cairo via a number of smooth and newly renovated highways, which you can alternate between.

The 26th of July Mehwar connects the Cairo-Alexandria Desert Road, which is right outside SODIC West, to the heart of the Egyptian capital. The Dahshour Road also connects SODIC West to 6th of October City, cutting through Juhayna Square. In addition, the soon-to-be-finished eight-lane highway, Rod El Farag Mehwar, will also link SODIC West to downtown Cairo, making the commute faster, easier and completely hassle-free.



Welcome to
Westtown
Medical
Centre

Supporting Your Medical Innovations



Westown Medical Centre's vision is to provide all the right tools for our prominent doctors to pioneer in a medically-catered and advanced space. Our fully integrated facility includes the renowned pre-natal and post-natal El Nada Hospital, as well as SODIC's own comprehensive Westown Clinics.

Westown Medical Centre will include two state-of-the-art medical buildings, including the appropriate retail mix, medical labs, and different specialty clinics that ensures doctors will have all they need to take pride in their space, allowing them to freely explore the world of medical advancements, providing high quality medical services to their patients.

Moreover, the facility's amenities will aid doctors in providing an all-around exclusive atmosphere for their patients, giving them a unique and welcoming experience through innovative designs, spacious landscape and a convenient circulation system.

Our Vision



Westown Medical Centre will create a full-fledged, multi-specialty medical destination that will provide world-class medical care, as well as having the country's best medical professionals in a prime location within SODIC West, catering to our residents and Sheikh Zayed's residents alike.



Accessibility

Healthcare

To provide an overall experience that fosters rehabilitation and relaxation, Westown Medical Centre has been developed to reflect a serene and cheerful environment in which natural light plays a key role in the treatment process, as well as providing a calming connection with the outdoor greenery through the incorporation of floor-to-ceiling windows, planted public terraces, and a large central garden.

The way the buildings are designed, their orientation and their mechanical systems respect the demands of the climate and environment. Architectural features such as deep window recesses and large canopies will shade the outdoor public spaces, which in turn will provide a well-balanced environment around the buildings. When coupled with intricate material selection and the various efficiencies of the building, we aim to reduce heat-gain around the building, thereby contributing to the comfort, as well as the energy efficiency of Westown Medical Centre.

Because Westown Medical Centre cares for all patients alike, and aims to provide a welcoming and easy experience for everyone, a special handicap access has been integrated into the building designs, ensuring easy accessibility to and from the buildings in an effortless manner. Aiming to anticipate patients' needs as well as we can, this service allows for all patients to feel at ease upon entering the facility, emphasising on the relaxing atmosphere that Westown Medical Centre aims to provide.



Westtown
Medical
Centre
Services



El Nada Hospital West

EL NADA HOSPITAL WEST AND EL NADA CLINICS WILL BE HOME TO

BEDS	50
SUITES	16
SURGERY ROOMS	5
IC UNITS	30

THAT ARE EQUIPPED WITH THE LATEST IN MEDICAL TECHNOLOGY.

El Nada Hospital is one of the most prominent hospitals in Egypt, with a vision to help improve health and well-being for people in Egypt and the region, specialising in maternity and neonatal services. El Nada Hospital West will provide 6th of October residents with new state-of-the-art technologies and world-class services. This will be a flagship for the hospital, and will be the only other El Nada facility in Egypt, along with its downtown branch.

El Nada Hospital West aims to provide medical services to a wider spectrum of patients looking to receive world-class treatment in a state-of-the-art facility under El Nada's prominent name.

Available within the hospital building is also a blood bank, a pharmacy, a technologically advanced lab with the latest in medical developments, as well as a cafeteria that serves high quality food, catering to patients and visitors alike, ensuring an all-around comfortable stay and visit.



In order to provide a new and fully comprehensive medical experience, Westtown Clinics will be equipped with top-of-the-line medical services that can withstand the on-going medical and technological advancements. Our flexible clinic modules that can evolve with every advancement, the expansive areas dedicated to medical centres and polyclinics, our world-class labs and radiology centres all ensure exceptional and fully integrated resources for our doctors.

With the aim of providing the ideal atmosphere for recovery, and a generally pleasant experience to both visiting patients and doctors, greenery and airy spaces are vital and unique aspects of Westtown Medical Clinics, with a vast internal green courtyard that provides a calm and soothing natural vibe. This vibe is carried across within the building itself, with spacious entrances, lobbies and three different visitors' elevators, all the way to the roomy common waiting areas that conveniently overlook green terraces for a relaxed waiting period. The unique design also favours cleanliness, providing garbage chutes where needed. Two-floor underground basements, as well as emergency exit cores are also included in the design plan, along with a complementing retail space.

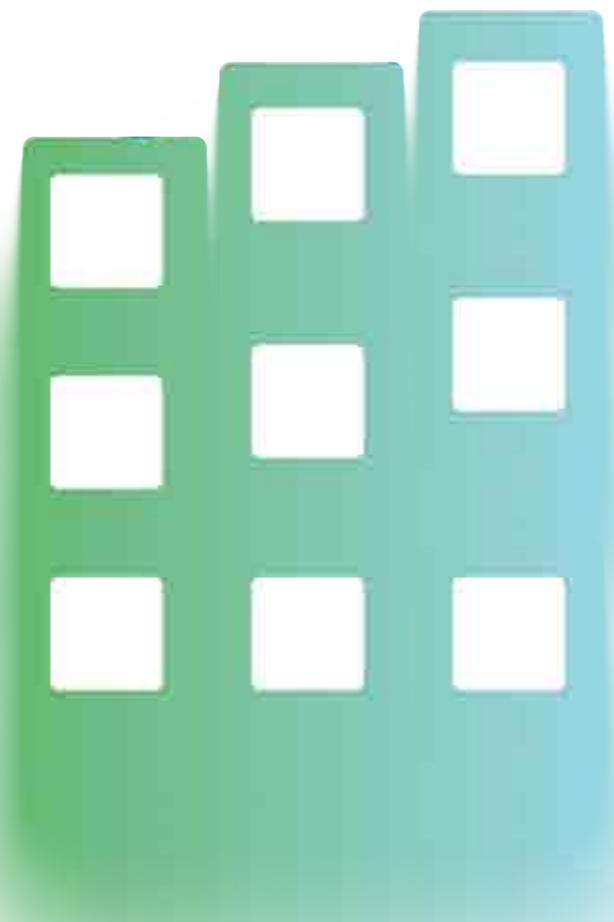
Retail



A number of retail outlets in the ground floor will be available, with direct accessibility from Westtown Medical Centre, or the underground basement if needed. This retail area overlooks either the internal green courtyard from one side, or the main road from the other. The retail outlets are designed to complement the comprehensive nature of a medical destination, and are planned to include a bank, a pharmacy as well as cafés and restaurants. With an emphasis on health and well-being, Westtown Medical Centre also offers a fitness and yoga studio, with the perfect atmosphere for healing the body and mind.

In addition, a photography studio is available to help you commemorate your memories with your new-born in a professional setting, allowing you to forever engrain your happy moments with your family.

For friends and family to be able to share these moments, a gift shop, a flower shop and a chocolate shop are also available, as well as a kids' area and daycare centre that provides entertainment, in a safe setting, for all your young ones.



Design & Architecture

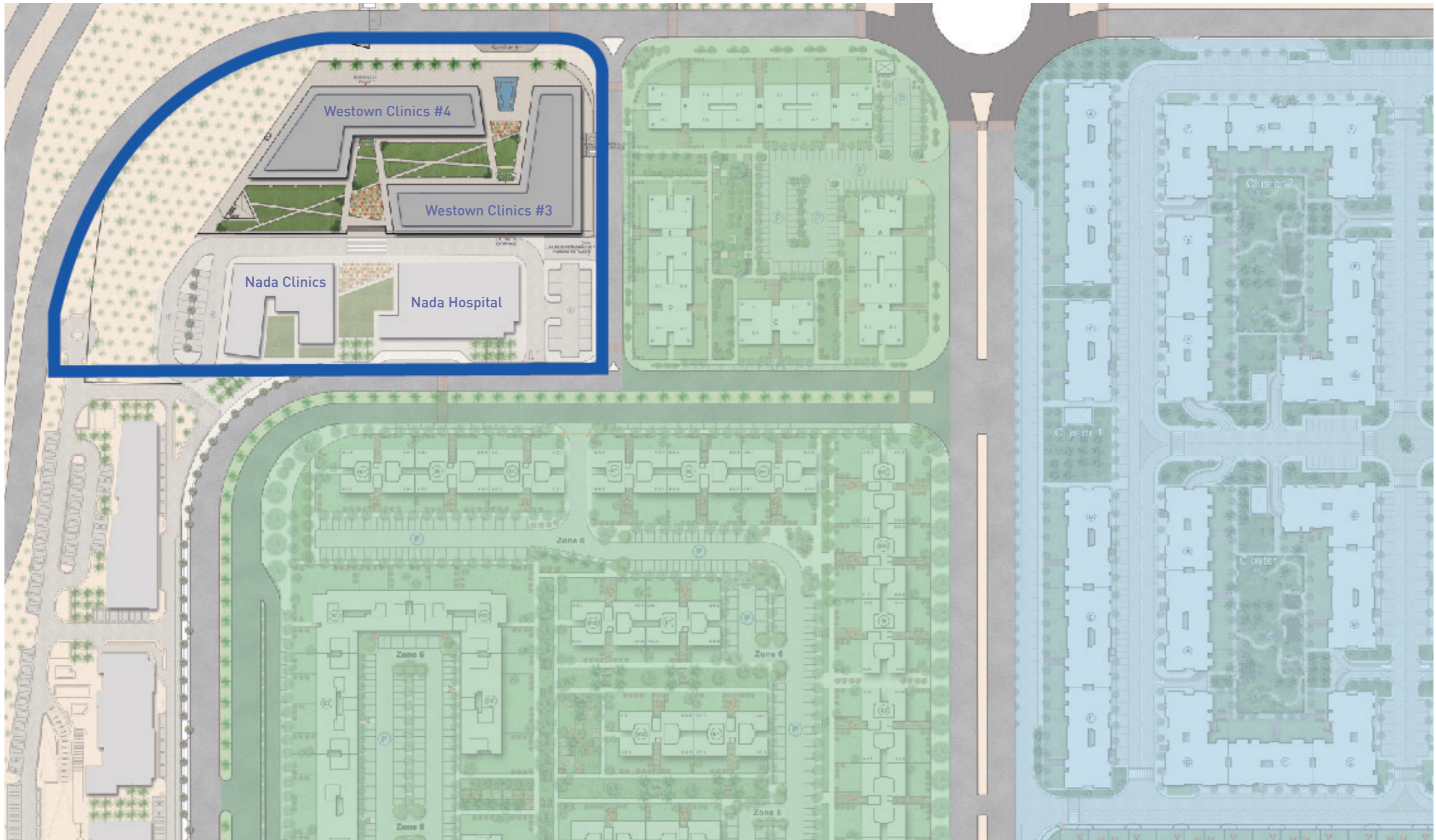


Planning For Excellence

The Westtown Clinics buildings, adjacent to El Nada Hospital West buildings, are organised around a series of tranquil gardens, as well as an expansive playground.

The structure is built in interlocking L- shaped buildings that encompass a central garden, providing the majority of clinics with access to open space, overlooking a vast and serene view. Each building is comprised of ground level accessible spaces for labs and retail with three levels of private clinics above. The entire project is built over a multi-level garage, providing convenient parking space directly connected to the facility. The ground level offers easy access to the diverse activities and uses provided by the building, with multiple entrances to medical, retail, and public functions.



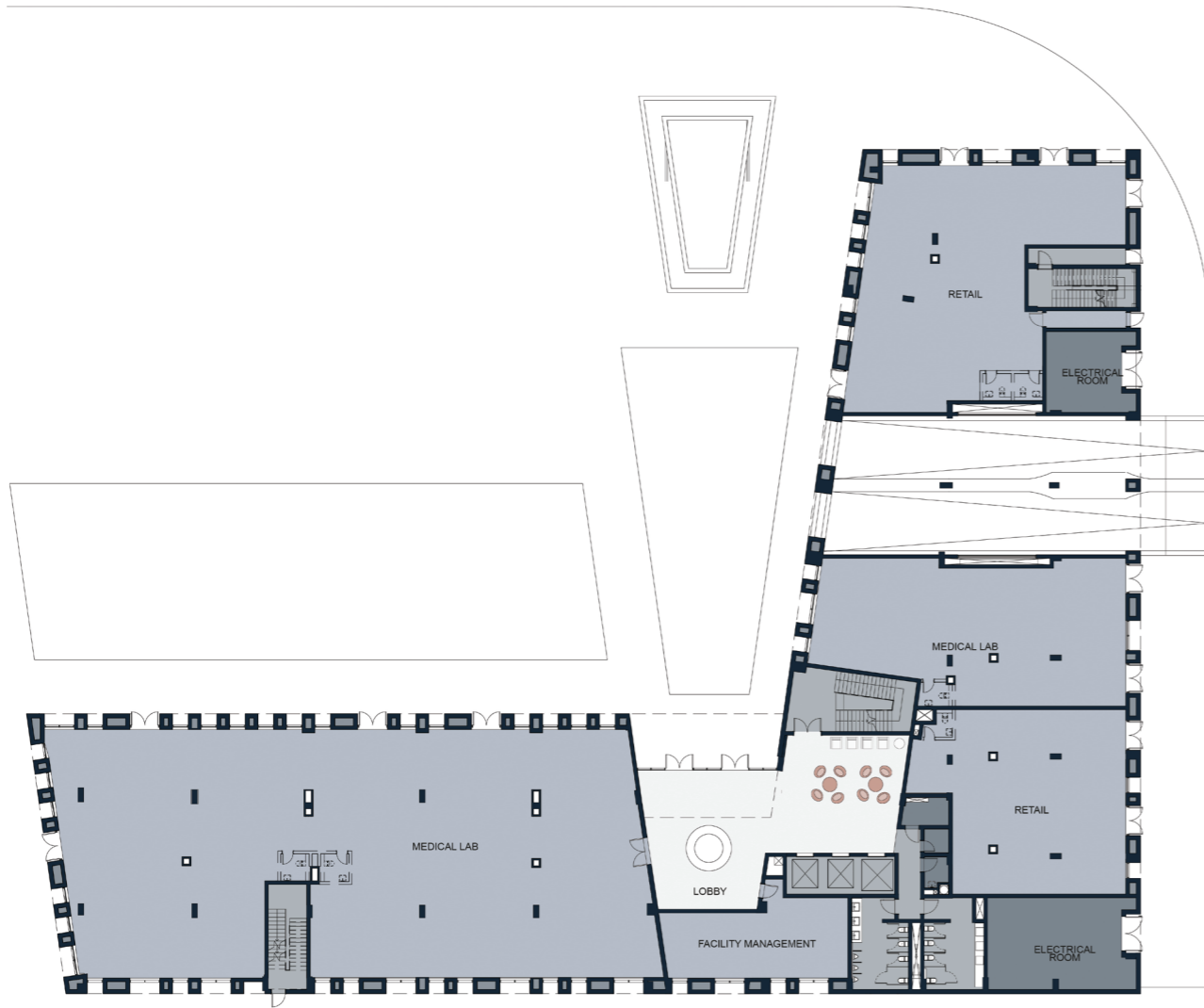


Master-Plan

■ Westtown Medical Centre

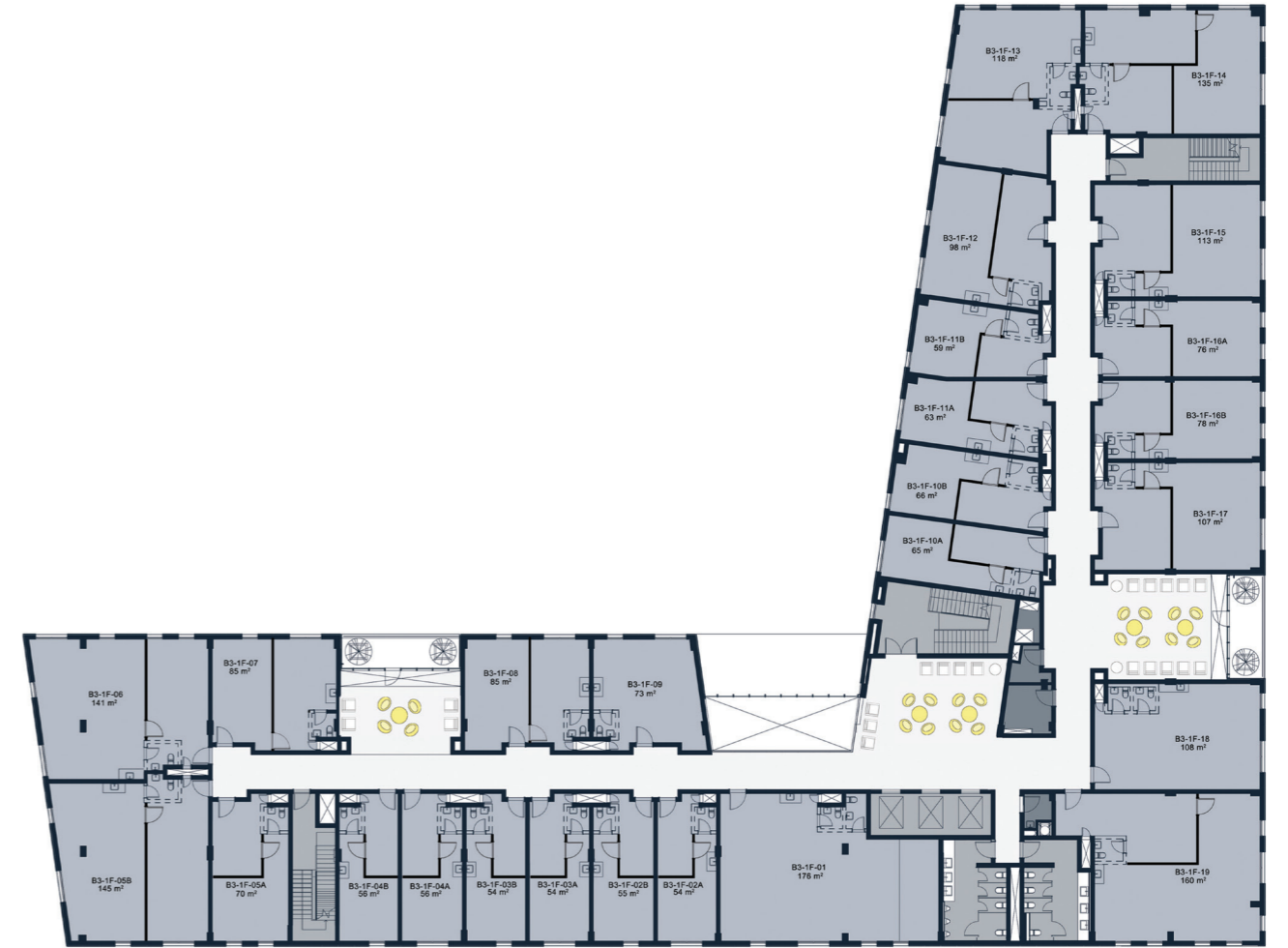
■ Westtown Residences

■ Westtown Courtyards



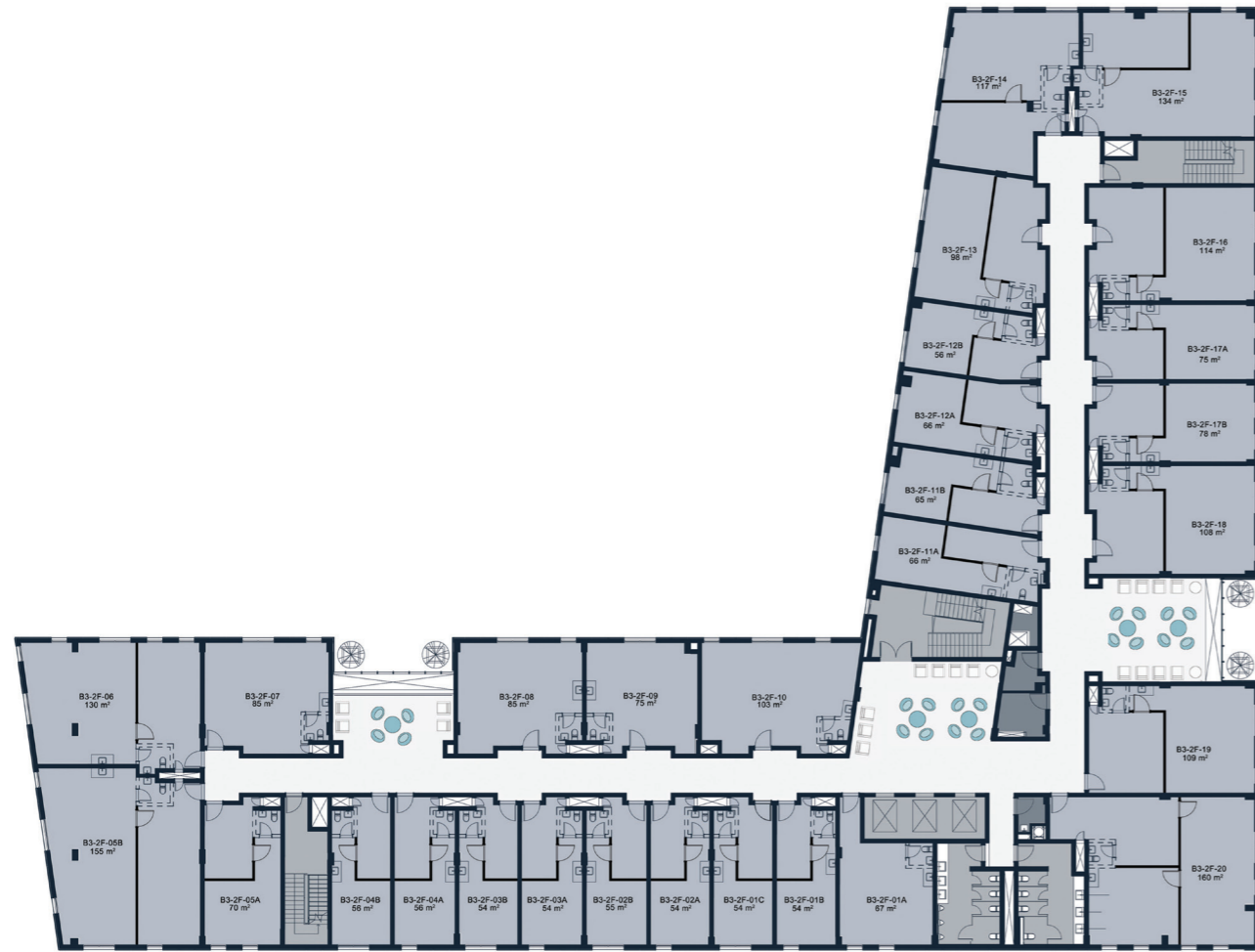
Ground Floor

- Green Terraces / Waiting Areas
- Circulation / Public Amenities
- Utility Zones
- Retail/Medical Labs



First Floor

- Clinics
- Green Terraces / Waiting Areas
- Circulation / Public Amenities
- Utility Zones



Second Floor

- Clinics
- Green Terraces / Waiting Areas
- Circulation / Public Amenities
- Utility Zones



Third Floor

- Clinics
- Green Terraces / Waiting Areas
- Circulation / Public Amenities
- Utility Zones



About SODIC

Building on a history of almost two decades of successful operation in Egypt, SODIC is one of the country's leading real estate development companies. Headquartered in Cairo and listed on the Egyptian stock exchange, SODIC brings to the market award-winning large-scale developments, meeting Egypt's ever-growing need for high quality housing, commercial and retail spaces.

We pride ourselves on our passion for excellence and commitment to fostering long-term relationships with our clients, shareholders, business partners and employees, which has helped us grow into the corporation we are today.



Be Part of Westown Medical Centre